



News

New MicroStation Freeware Available

To coordinate with our newly offered MicroStation custom programming service, a set of useful freeware applications for MicroStation is [available on our website](#). Be sure to check out the new page and [let us know](#) if we can assist you with your custom MicroStation VBA needs.

Legal Stuff:

We do not sell Bentley products. MicroStation and InRoads are Bentley products and trademarked as such. We only offer this information as a benefit to our subscribers.

Events

[<< back to top](#)

Bentley:

- [The IDDEA Group 2007 Fall Conference](#) - Oct 3-5, 2007
Scheman Center on Iowa State Campus - Ames, Iowa
- [Bentley Civil Regional Training for InRoads Users](#) - Oct 22-24, 2007
Sheraton Atlanta Hotel - Atlanta, GA
Meet us there!
- [Bentley Civil Regional Training for GEOPAK Users](#) - Dec 10-12, 2007
LOEWS Miami Beach Hotels - Miami Beach, FL
- [BCUKI Winter Conference 2008](#) - Feb 28-29, 2008
Sheraton Heathrow Hotel - London, UK

Are there TMC Meetings, Seminars, Trade shows, and Conferences you think are interesting? [Let us know](#) and we will add them to our newsletter.

MicroStation Tip

[<< back to top](#)

Coordinate Input

Placing elements in MicroStation is usually done one of two ways: absolute coordinates or relative to an existing point. Workflows for placing those elements to absolute coordinates can be done one of two ways: using the Key-in Browser dialog or using AccuDraw's Data Point Key-in

Via the Key-in Browser:

Absolute Coordinates

1. Select a placement tool
2. In the key-in browser type the coordinates: **"XY=1000,1000,0"**
3. Hit the Enter key on the keyboard or the Run icon from the key-in browser. The element will be placed at the keyed in coordinate value.
4. Continue to use the key-in browser and the "XY=" key-in to finish placing elements/vertices/cells...

Relative Point

IN THIS ISSUE

1. [News](#)
2. [Events](#)
3. [MicroStation tip](#)
4. [InRoads tip](#)
5. [Open enrollment classes](#)
6. [On-site training](#)

SPREAD THE WORD

Spread the word. Pass this newsletter on to a friend. If a friend forwarded this issue to you, [sign up](#) for your own copy.

QUICK LINKS

- [Click for past issues.](#)



1. Select a placement tool.
2. Tentative snap to the relative origin point.
3. In the key-in browser type the relative distance you want to move :
"DL=20,10,0"
4. Hit the Enter key on the keyboard or the Run icon from the key-in browser.
 The element will be moved 20 units in the X direction, 10 units in the Y direction, and 0 units in the Z direction.

Via AccuDraw:

There are two shortcut key-ins defined in AccuDraw that will allow you to place elements to specified values, they are "P" and "M".

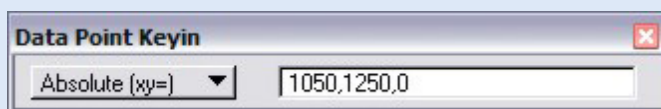


- "P" - will open the Data Point Key-in dialog for a one time key-in value and will then close when it is accepted.
- "M" - will open the Data Point Key-in dialog and will remain open after each value is accepted.



Absolute Coordinates

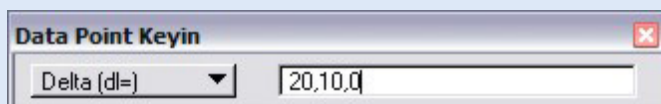
1. Select a placement tool
2. With the Focus with the AccuDraw dialog use the "M" shortcut key. The Data Point Key-in dialog will appear.
3. From the drop down list select the "**Absolute (xy=)**" and enter the values in the key-in field.



4. Hit the Enter key on the keyboard. The element will be placed at the keyed in coordinate value.
5. Continue to use the Data Point Key-in and the "**Absolute (xy=)**" option to continue placing elements/vertices/cells...

Relative Point

1. Select a placement tool.
2. Tentative snap to the relative origin point.
3. With the Focus with the AccuDraw dialog use the "M" shortcut key. The Data Point Key-in dialog will appear.
4. From the drop down list select the "**Delta (dl=)**" and enter the values in the key-in field.



5. Hit the Enter key on the keyboard. The element will be moved 20 units in

the X direction and 10 units in the Y direction.

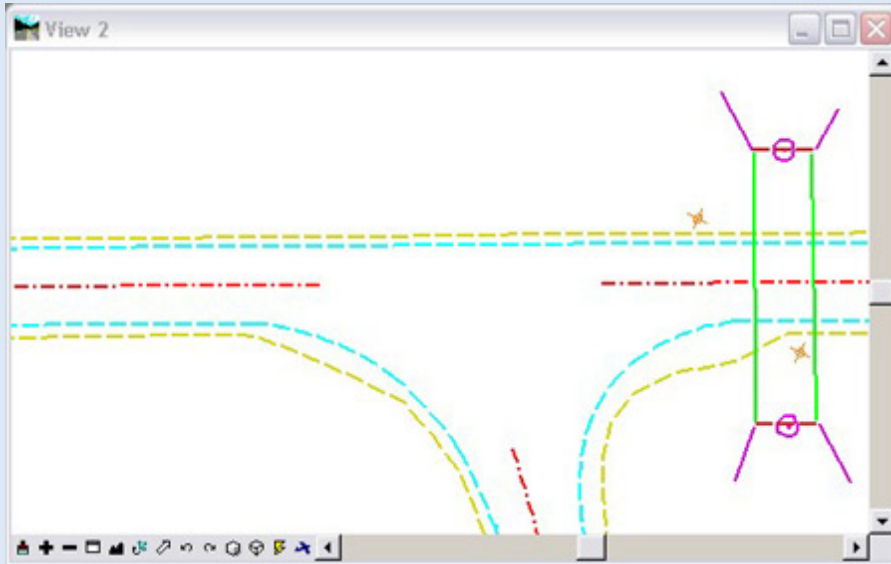
[[Tip Archives](#)]

InRoads Tip

<< back to top

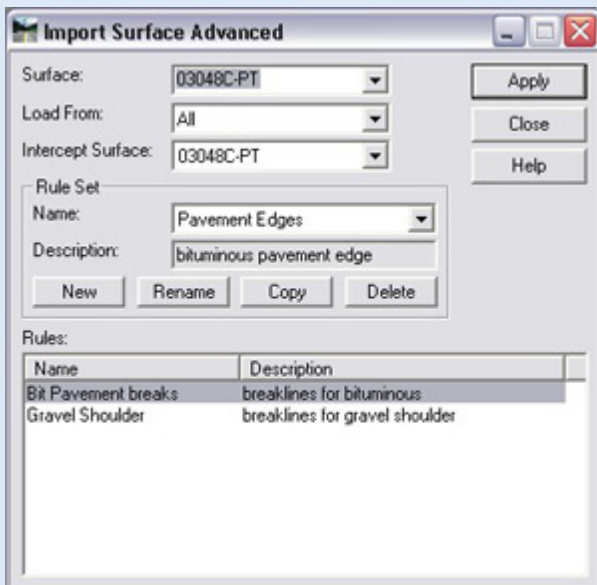
Creating a DTM from Graphics using Rule Sets

** This tip is for InRoads XM Edition

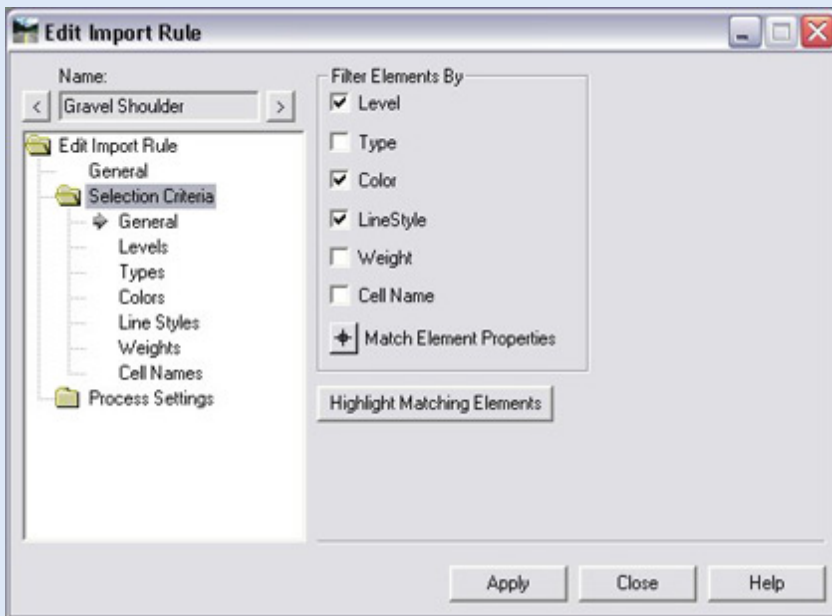


Imagine that you need to create a DTM from graphics; you have tens if not hundreds of drawings to work with. If they are created using consistent CADD standards, Rule Sets can make your life easier, much easier. While InRoads has always had the capability to import graphics into a DTM, this had to be accomplished by re-issuing the command for each unique feature type. The advanced import tool streamlines this process.

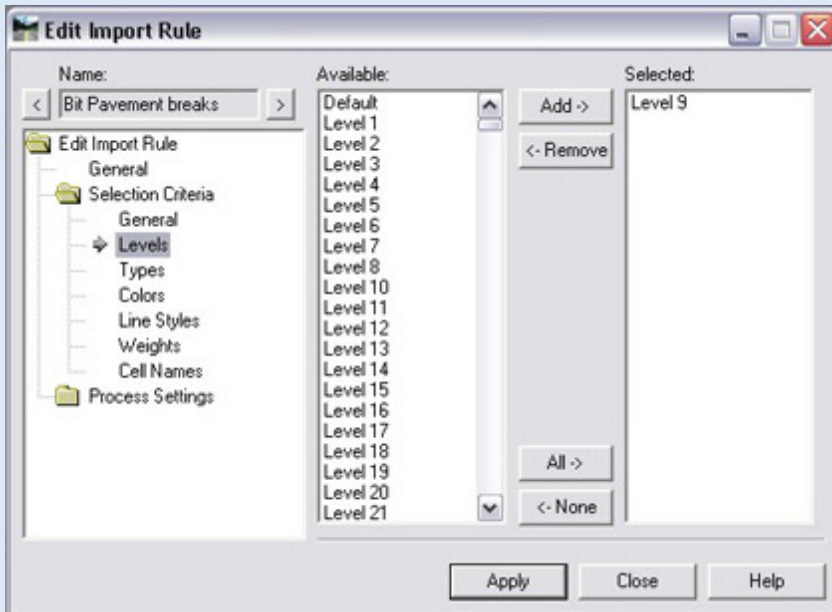
To access this tool; from the InRoads dialog; select **File>Import>Surface Advanced**



- The first step is to create a Rule Set that will store individual rules.
- Second, create unique rules that collectively make up the set.



- A right-click in the 'Rules' portion of the main dialog allows you to create and manage rule.
- Rules are defined based on graphic attributes of the MicroStation elements.



- You can drill-down into the specific attributes to define the rules.

Use the Help buttons to explore all the options.

Rule Sets are stored in your setting (*.xin) file for future use.

[[Tip Archives](#)]

Open Enrollment Classes

<< back to top

Open-Enrollment Classes With Seats Available.

[MicroStation V8 - Everything 3D](#)

Oct. 25-26

Madison, WI

[MicroStation V8 - Fundamentals](#)

Nov. 6-9

Madison, WI

[MicroStation V8 - User Update](#)
[MicroStation V8 - Power User](#)
[MicroStation V8 - Fundamentals](#)

Nov. 27-28 Madison, WI
Nov. 29-30 Madison, WI
Dec. 12-14 Madison, WI

[InRoads - XM Essentials](#)
[InRoads - Site](#)

Dec. 3-7 Madison, WI
Dec. 17-19 Madison, WI

To be removed from this monthly newsletter, please reply to this message and note your wishes.
[Top](#) | [Contact us](#) | [Visit our web site](#)