



The Envision Group Inc. specializes in MicroStation and InRoads software from Bentley Systems Inc. We utilize our experience by teaming with you to provide training, consulting, and support to users and system administrators. We also provide 3D virtual modeling services using MicroStation, InRoads, and other advanced software.

News

New addition to the team

The Envision Group has expanded its team to include Dhanil Nikolla. Dhanil is experienced as a petroleum engineer and will assist with both MicroStation and design software applications. Let us know if our team can be of any assistance to you with any of your CADD or design software needs.

Legal Stuff:

We do not sell Bentley products. MicroStation and InRoads are Bentley products and trademarked as such. We only offer this information as a benefit to our subscribers.

IN THIS ISSUE

1. [News](#)
2. [Events](#)
3. [MicroStation tip](#)
4. [InRoads tip](#)
5. [Open enrollment classes](#)
6. [On-site training](#)

SPREAD THE WORD

Spread the word. Pass this newsletter on to a friend. If a friend forwarded this issue to you, [sign up](#) for your own copy.

Events

[<< back to top](#)

Bentley:

- [BCUKI Winter Conference 2008](#) - Feb 28-29, 2008
Sheraton Heathrow Hotel - London, UK
- [Nebraska User Group Spring 2008 Conference & Workshops](#) - Mar 17-18, 2008
Cornhusker Marriott - Lincoln, Nebraska
- [BE Conference 2008](#) - May 28 - 30, 2008
Baltimore Convention Center - Baltimore, MD
- [The IDDEA Group 2008 Fall Conference](#) - Oct 1-3, 2008
Scheman Center on Iowa State Campus - Ames, Iowa

QUICK LINKS

- [Click for past issues.](#)



Are there TMC Meetings, Seminars, Trade shows, and Conferences you think are interesting? [Let us know](#) and we will add them to our newsletter.

MicroStation Tip

[<< back to top](#)

Align Tool

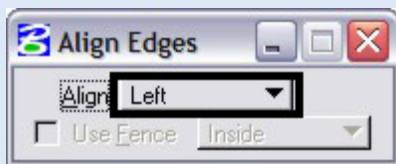
From the Manipulate toolbox the Align tool will help you align elements and text to an edge of an existing element.

Align

1. Open the Manipulate toolbox from the Main tool frame.

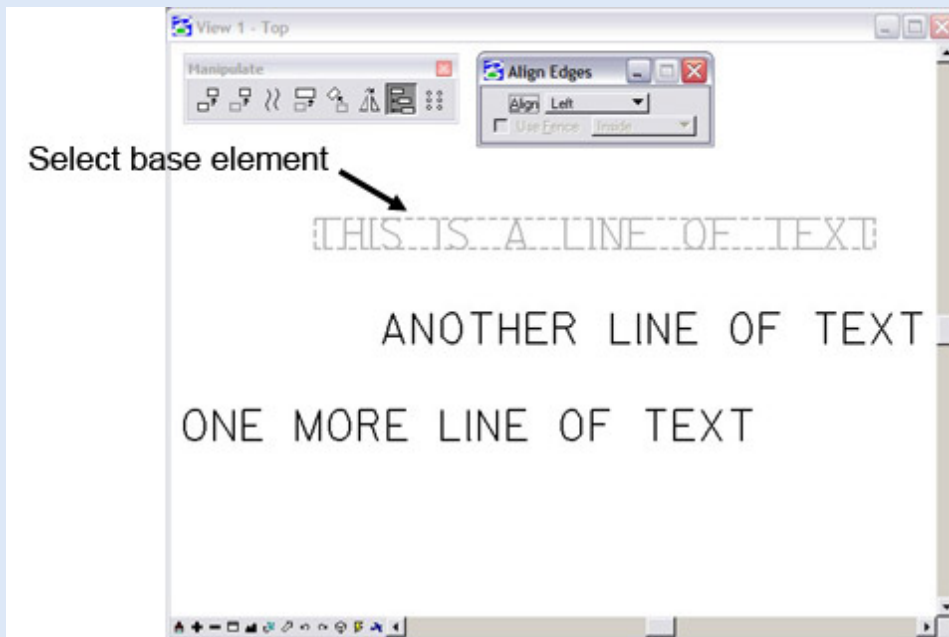


2. The second button from the end is the Align tool, select the button.
3. From the Tool Settings dialog select the alignment option from the drop down list. For this example the "Left" option will be used.

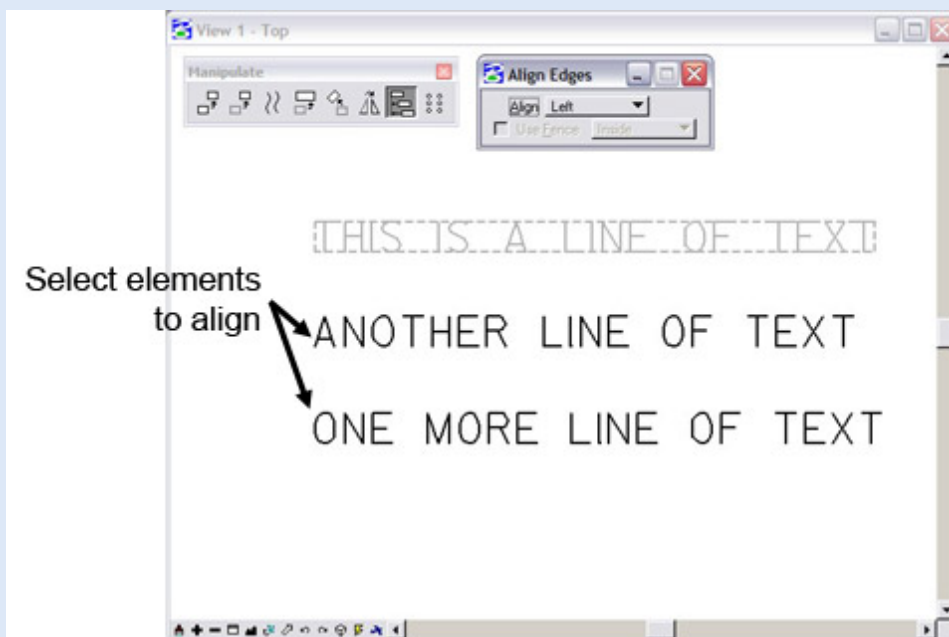


Note: Other alignment options include Top, Bottom, Right, Horizontal Center, Vertical Center, and Both Centers.

4. Following the prompts in the lower left hand corner of MicroStation select the base element for alignment.



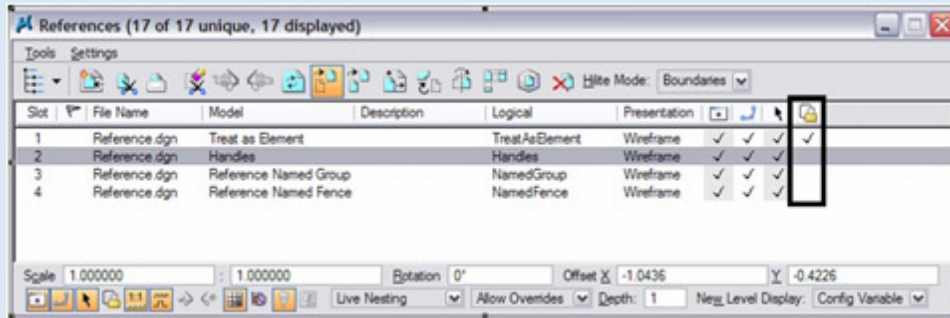
5. Following the prompts in the lower left hand corner of MicroStation select the elements to align.



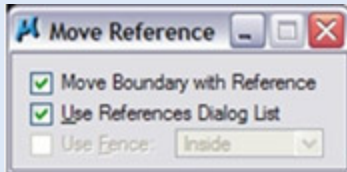
6. After selecting the elements to align reset (right click) out of the command.

XM - Reference Enhancements

Treat Attachment as Element for Manipulation – when this option is enabled, it will allow the use of standard Manipulate tools with references, such as Move, Copy, and Rotate. The pull-down and pop-up menu options are still available from the Reference File dialog.



Move Boundary with Reference – when this option is enabled in the Move Reference command it will allow the reference clip boundary to remain stationary allowing only the reference file to be moved.



Reference Set key-ins – new set of key-ins that can be used on reference files during a batch process for example enabling or disabling Display, Snap, Locate, and Treat As Element.

Reference file formats – new file formats include 3D Studio Max: **3DS**; Polygon Object File **OBJ** and Google Sketch Up: **SKP**

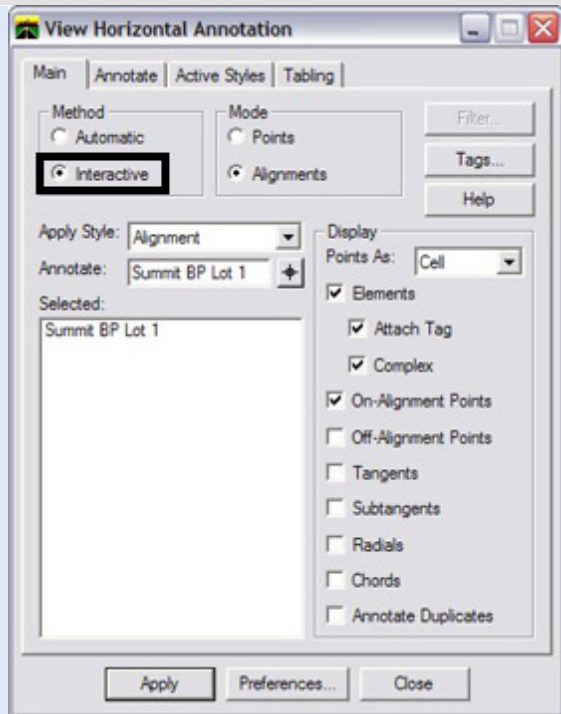
Raster Reference file formats – new file formats include Adobe: **PDF**, I/RAS B such as **CLR**, **LRD**, **MPF** and **RST**, JPG 2000: **JPG**, Enhanced Compression Wavelet: **ECW**

[[Tip Archives](#)]

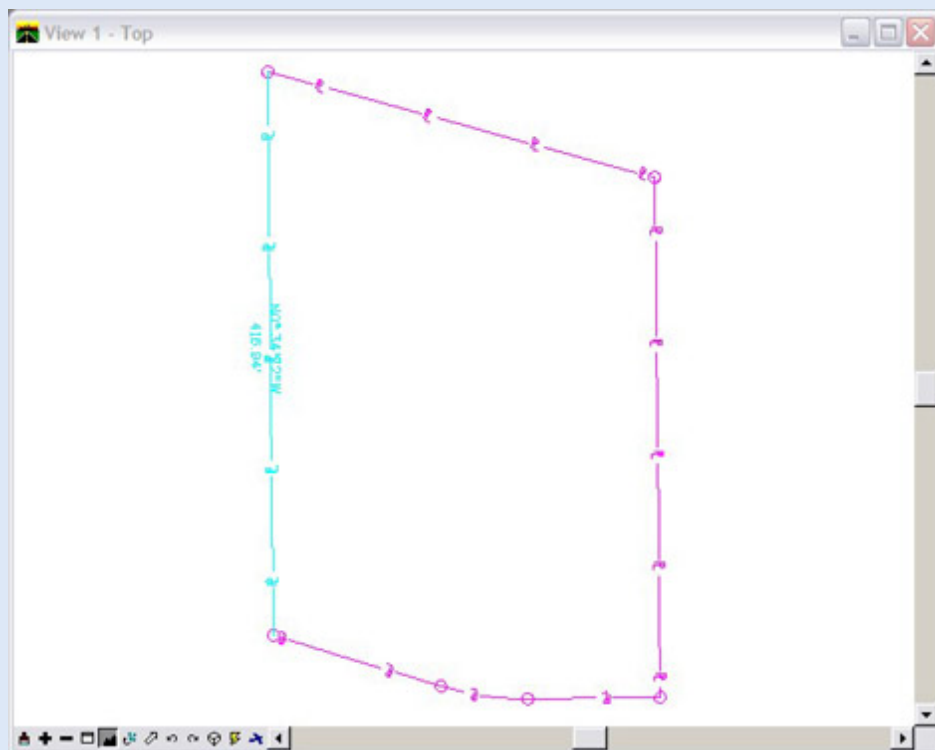
Annotate Geometry Interactively

When you need to annotate a portion of a horizontal alignment, you can use the interactive option which will allow the user to select individual linear or circular elements for annotation.

1. From the InRoads dialog pull down menu select **Geometry > View Geometry > Horizontal Annotation**. The Horizontal Annotation dialog will appear.
2. Define the Horizontal Alignment to annotate and select the Interactive radio button.



3. Select the **Apply** button.
4. **Select** the element to annotate, the element will highlight, and then accept to generate the annotation.



5. Continue to select elements for annotation. Reset (right click) to exit the command.

[[Tip Archives](#)]

MicroStation V8 - Power User	Jan. 15-16	Madison, WI
MicroStation V8 - Accudraw	Jan. 25	Madison, WI
MicroStation V8 - Fundamentals	Feb. 4-7	Madison, WI
MicroStation V8 - Everything 3D	Feb. 20-22	Madison, WI
InRoads - Site	Mar. 3-5	Madison, WI
InRoads - Fundamentals	Mar. 10-14	Madison, WI

To be removed from this monthly newsletter, please reply to this message and note your wishes.
[Top](#) | [Contact us](#) | [Visit our web site](#)

The Envision Group: 8517 Excelsior Dr, Suite 102, Madison, WI 53717