

The Envision Group Inc. specializes in MicroStation, InRoads, AutoCAD, CAiCE & Civil 3D software. We utilize our experience by teaming with you to provide training, consulting, and support to users and system administrators. We also provide 3D virtual modeling services using MicroStation, InRoads, and other advanced software.

## News

### BE Conference 2008 - Open Registration

Bentley's [BE Conference 2008](#) is now open for registration. The BE Conference is an inclusive and engaging environment, providing the best place for technical professionals to learn about Bentley technologies and industry best practices, from the leaders in infrastructure software. This is a great conference to attend for training sessions, information on upcoming Bentley releases, where the company is headed, networking, and other business related activities. Registration fills up fast so sign-up today!

This years BE conference will be held at

BE Conference 2008  
 Baltimore Convention Center  
 Baltimore, Maryland USA  
 May 28 - 30, 2008

### TheEnvisionGroup.Net Website Redesigned

Make sure to check out our newly redesigned website at <http://www.theenvisiongroup.net>. All classes and content have been updated and organized to fit the new layout. The Envision Graphics division is also no longer a separate entity and can be found at the link above. [Let us know](#) if you have any issues viewing the new design.

#### Legal Stuff:

We do not sell Bentley products. MicroStation and InRoads are Bentley products and trademarked as such. We only offer this information as a benefit to our subscribers.

## IN THIS ISSUE

1. [News](#)
2. [Events](#)
3. [MicroStation tip](#)
4. [MicroStation XM tip](#)
5. [InRoads tip](#)
6. [CAiCE tip](#)
7. [Open enrollment classes](#)
8. [On-site training](#)

## SPREAD THE WORD

Spread the word. Pass this newsletter on to a friend. If a friend forwarded this issue to you, [sign up](#) for your own copy.

## QUICK LINKS

- [Click for past issues.](#)



## Events

[<< back to top](#)

- [Nebraska User Group Spring 2008 Conference & Workshops](#) - Mar 17-18, 2008  
 Cornhusker Marriott - Lincoln, Nebraska
- [FOSE 2008 Exhibition](#) - Apr 1-3, 2008  
 Walter E. Washington Convention Center, Washington, DC  
 Visit The Envision Group booth #2929 in the Small Business Pavilion
- **CAD Managers Forum** - April 9, 2008 (9:00am – 2:00pm)  
 Strand Associates - 910 West Wingra Drive, Madison, WI  
 Now expanded to include a technical session!  
 The Envision Group will sponsor an introduction and Q&A session about AutoCAD Map and MicroStation Geographics during a technical session from 9:00 to noon. After a quick lunch the CAD Managers will reconvene.  
 Please [RSVP](#) by April 2nd so we can get a good head count.
- [BE Conference 2008](#) - May 28 - 30, 2008  
 Baltimore Convention Center - Baltimore, MD
- [The IDDEA Group 2008 Fall Conference](#) - Oct 1-3, 2008

Scheman Center on Iowa State Campus - Ames, Iowa

Are there TMC Meetings, Seminars, Trade shows, and Conferences you think are interesting? [Let us know](#) and we will add them to our newsletter.

## MicroStation Tip

<< back to top

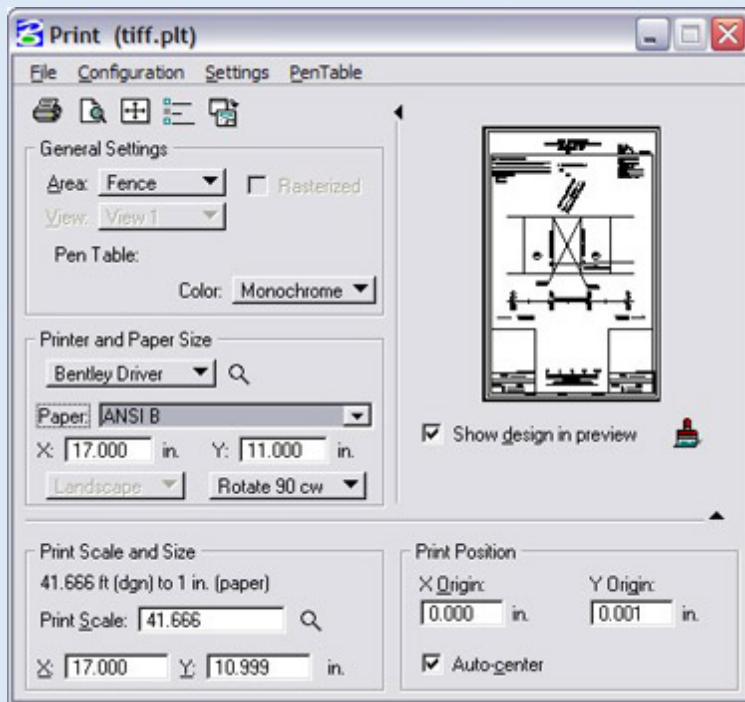
### Printing TIFF and JPEG files from MicroStation

[ [View the tip as a Flash video](#) ]

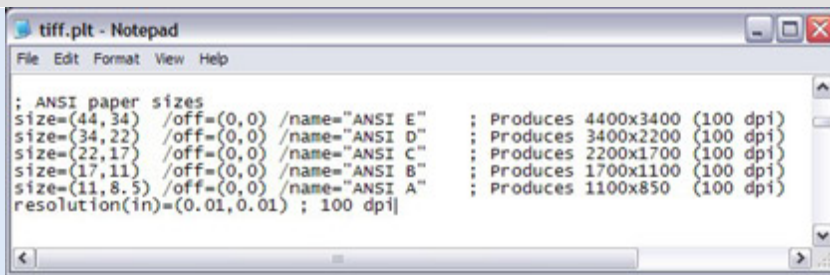
Instead of doing a print screen to try and capture your MicroStation graphics on your screen you can print directly to a TIFF or JPEG file. Printing to TIFF or JPEG will give you full size higher resolution.

#### Steps:

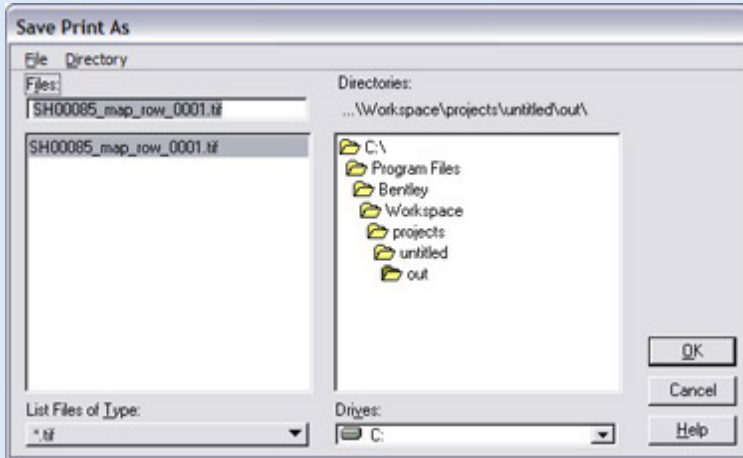
1. Open the Print dialog and prepare your print area.
2. Select the **Bentley Driver** then the **Browse** magnifying glass. The **Select Printer Driver File** dialog will open.
3. Navigate to C:\Program Files\ Bentley\Workspac\system\plotdrv
4. Select the **tiff.plt** plot driver and then select the **OK** button. The **Select Printer Driver File** dialog will close.



5. Select the correct **Paper** size from the Paper drop down.
  - a. If you do not see paper sizes from the drop down you may need to uncomment the paper sizes in the printer driver.
  - b. To edit the printer driver go to the **Print** dialog drop down menu **File > Edit Printer Driver**. The printer driver **tiff.plt** will open in **Notepad**.
  - c. Scroll to the **ANSI paper sizes** section and uncomment the size and resolution by removing the semicolon. Then Save and Exit the **tiff.plt** file.



- d. The plot driver will need to be reloaded in order to see the changes, go to the **Print** dialog drop down menu **File > Reload Print Driver**. The ANSI sizes will appear in the Paper drop down.
- 6. Select the **Print** button and the **Save Print As** dialog will appear. The print will be saved as a TIFF file that can be opened with any raster viewer.



**Note:** The JPEG printer driver can be found in the same directory and used the same way.

[ [Tip Archives](#) ]

## MicroStation XM Tip

[<< back to top](#)

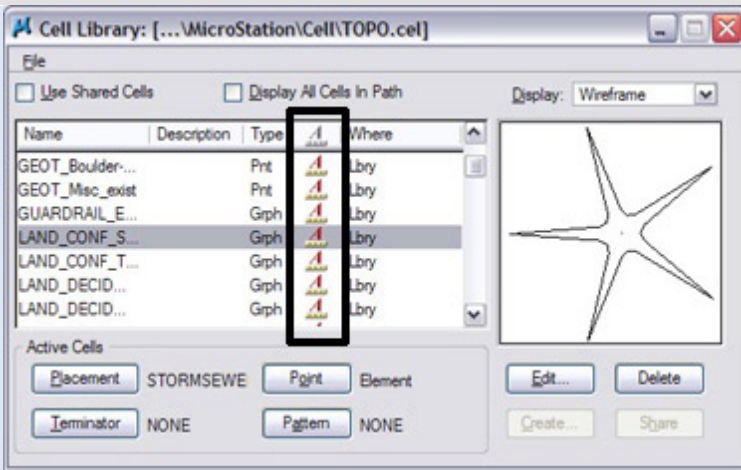
### XM - Annotation Scale with Cells

[ [View the tip as a Flash video](#) ]

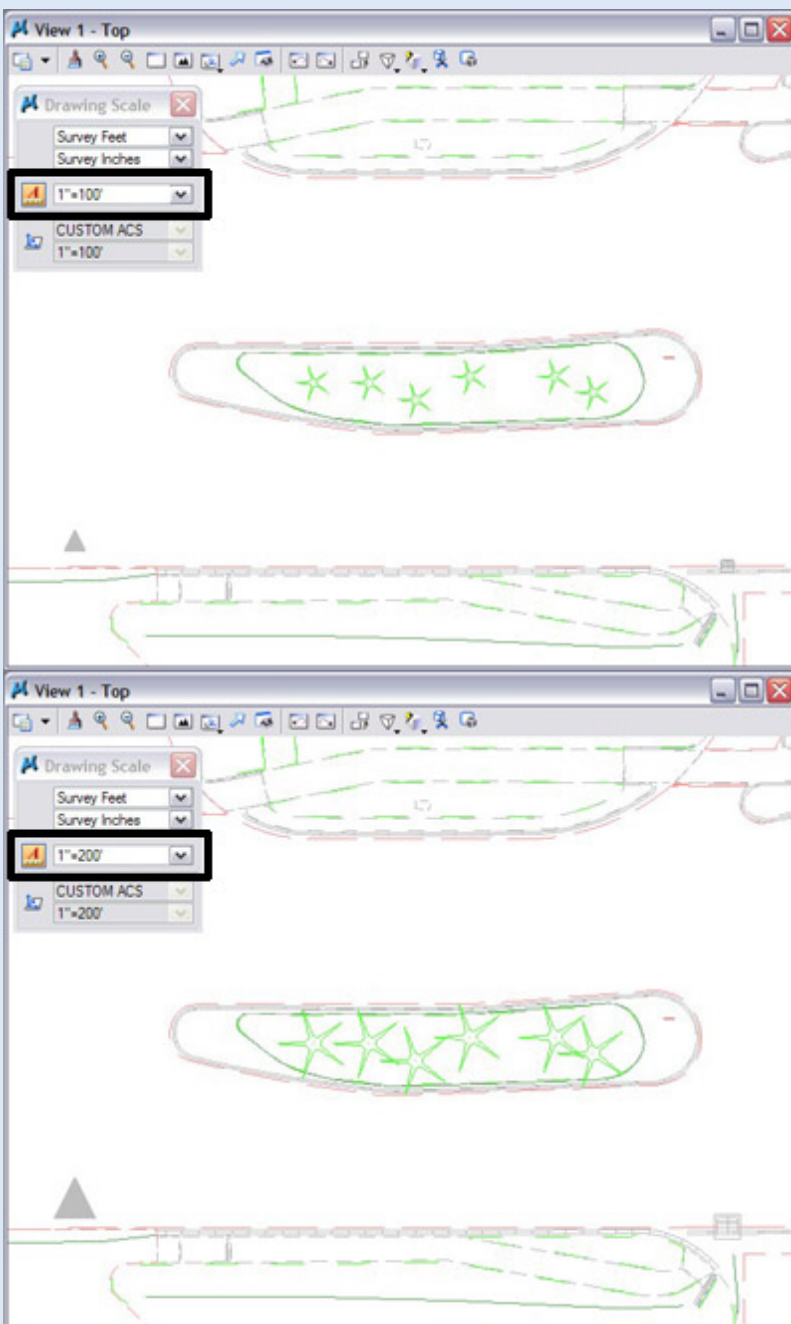
#### **Annotation Scale**

Cells can now utilize the Annotation scale setting that has been used by Text and Dimensions in previous V8 releases of MicroStation. When changing the model annotation scale factor, the cells placed with annotation scale on will be resized.

Prior to placing cells with annotation scale the cell library needs to be opened in MicroStation XM and the Annotation Scale needs to be enabled.



Once the cells are placed you can change the Annotation Scale factor and all the cells will scale accordingly. Using annotation scale means no longer having a need for multiple DGN files or Levels that represent different plotting scales.



[\[ Tip Archives \]](#)

## InRoads Tip

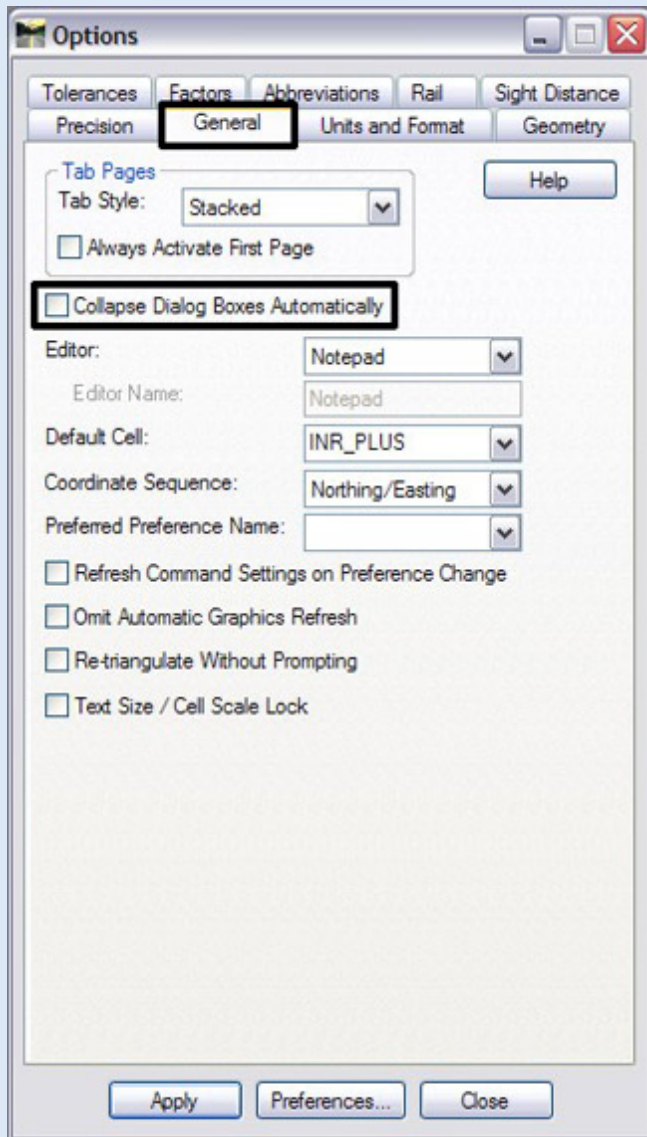
[<< back to top](#)

### Options – Collapse Dialog Boxes Automatically

It is a well know fact that InRoads dialogs take up a lot of screen real-estate. To alleviate this issue dialogs in InRoads can be configured to automatically collapse when executing a command.

However for newer users, if toggled on, this may introduce some confusion as to when a command is complete or if InRoads is waiting for some user interaction.

This option can be toggled on or off by selecting Tools>Options from the InRoads menu bar and selecting the [General] tab. There the user can choose if dialogs should stay resident on the screen or collapse during command execution. If this option is toggled on, a right-click on the mouse will restore a dialog that has been automatically collapsed.

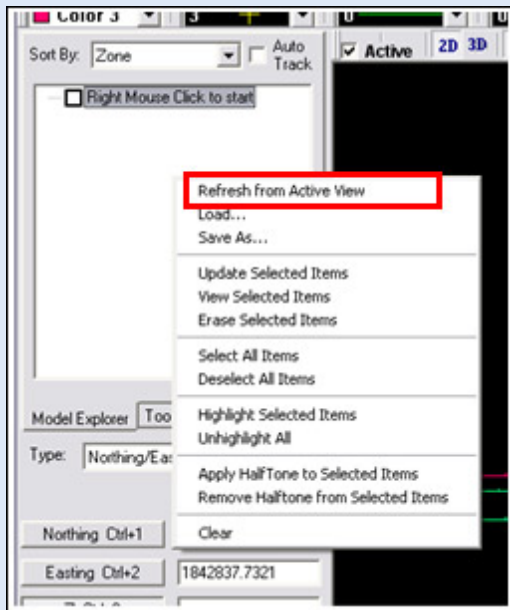
[\[ Tip Archives \]](#)

## CAiCE Tip

[<< back to top](#)

## CAiCE – Using the Model Explorer to Manage Displayed Information

Managing information displayed in a CAiCE view can be simplified by using the functionality found in the CAiCE Model Explorer. The Model Explorer allows you to update screen graphics to reflect a change in settings or erase an item from your view without affecting other elements currently being viewed.

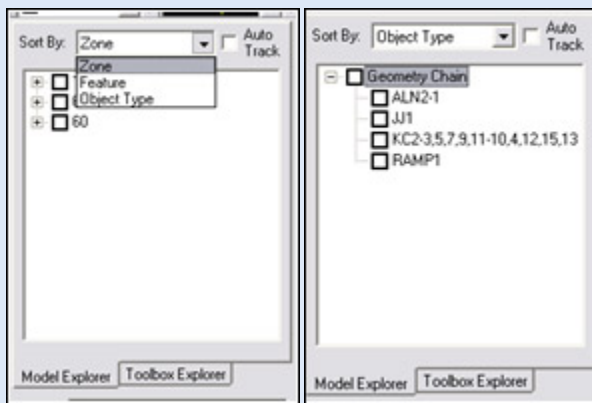


To open the Model Explorer, select the menu option Window > Explorer Center/Snap Bar.

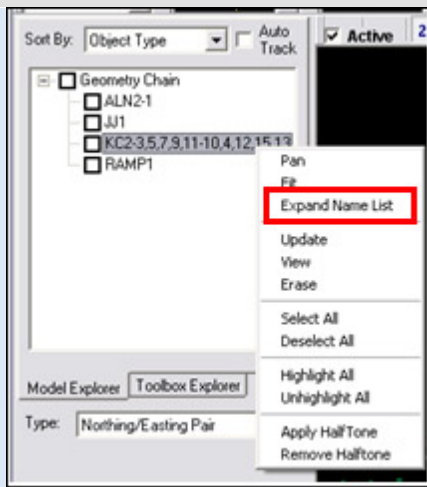
In the example shown here, several geometry chains have been viewed in the CAiCE view window. After viewing you realize you have not attached a feature table to your project and need to re-display the information using the graphical attributes set in a feature table. You also want to erase one of the chains being displayed.

To do this, right-mouse click in the Model Explorer to display the model explorer menu. Your first step in this example will be to Refresh from Active View.

Note that the information loaded into the Model Explorer is being sorted by Zone. Select the Sort By: drop-down list and select Object Type, then expand the Geometry Chain List (data point on the + sign next to the words Geometry Chain).



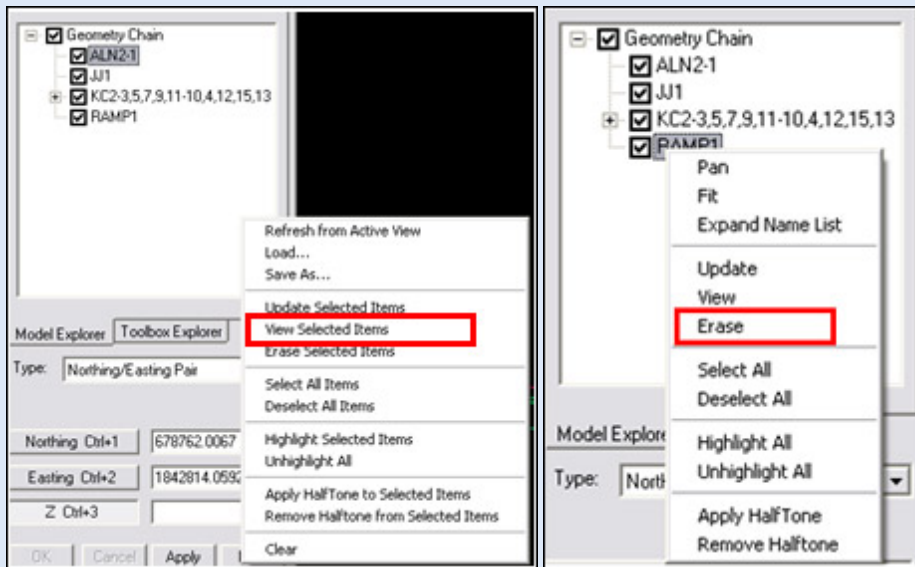
If you need to expand the list further, highlight the list of chains you want to expand, then right mouse click and select Expand Chain List.



Attach a standard feature table to your project using Tools > Attach > Feature Table. Note that the display of your chains in the CAiCE view does not change when a feature table gets attached.

In the Model Explorer, select all the chains listed. Place your cursor in a white area inside the Model Explorer. Right-mouse click and select Update Selected Items. The chains in your view will be re-displayed using the graphic attributes set by the feature codes of the elements being viewed and the attached feature table.

To erase a chain currently being displayed in the CAiCE view, highlight the chain name in the Model Explorer. With the chain selected, right-mouse click and select Erase. Just that single chain will be erased from the view.



[ [Tip Archives](#) ]

## Open Enrollment Classes

<< back to top

### Open-Enrollment Classes With Seats Available.

<a href="#">MicroStation V8 - Power User</a>	Apr. 15-16	Madison, WI
<a href="#">MicroStation V8 - 2004 User Upgrade</a>	May 1-2	Madison, WI
<a href="#">MicroStation V8 - Everything 3D</a>	May 14-16	Madison, WI
<a href="#">InRoads - Fundamentals</a>	March 24-28	Madison, WI

[InRoads - Survey](#)

May 20-21

Madison, WI

CAiCE Fundamentals

May 5-8

Madison, WI

---

To be removed from this monthly newsletter, please reply to this message and note your wishes.

[Top](#) | [Contact us](#) | [Visit our web site](#)

The Envision Group: 8517 Excelsior Dr, Suite 102, Madison, WI 53717